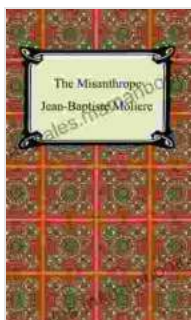


Delving into the Profound Perspective of Jorie Graham's "The Misanthrope"

Jorie Graham, a contemporary American poet, is widely recognized for her evocative and thought-provoking poetry. Among her notable works, "The Misanthrope" stands out as a compelling and introspective exploration of human experience.

The Central Figure: A Solitary and Contemplative Soul

The title of the poem, "The Misanthrope," immediately introduces the reader to its central figure—an individual estranged from and disillusioned with humanity. The misanthrope is portrayed as a solitary observer, keenly aware of the flaws and hypocrisies of those around him.



The Misanthrope by Jorie Graham

★★★★☆ 4 out of 5

Language : English
File size : 184 KB
Text-to-Speech : Enabled
Screen Reader : Supported
Enhanced typesetting : Enabled
Print length : 86 pages
Lending : Enabled



Through the misanthrope's eyes, Graham paints a vivid portrait of a world characterized by alienation, indifference, and the pursuit of superficiality. The misanthrope's detachment allows him to see through the facade of

human interactions, revealing the emptiness and meaninglessness beneath.



Themes of Isolation and Connectivity

Isolation and connection emerge as central themes in "The Misanthrope." The misanthrope's profound sense of solitude is not depicted as a mere

rejection of others but rather as an active choice to withdraw from the world.

Graham suggests that the misanthrope's isolation stems from a deep understanding of the nature of human relationships. He recognizes that true connection and understanding are elusive, often replaced by superficial interactions and self-serving motives.

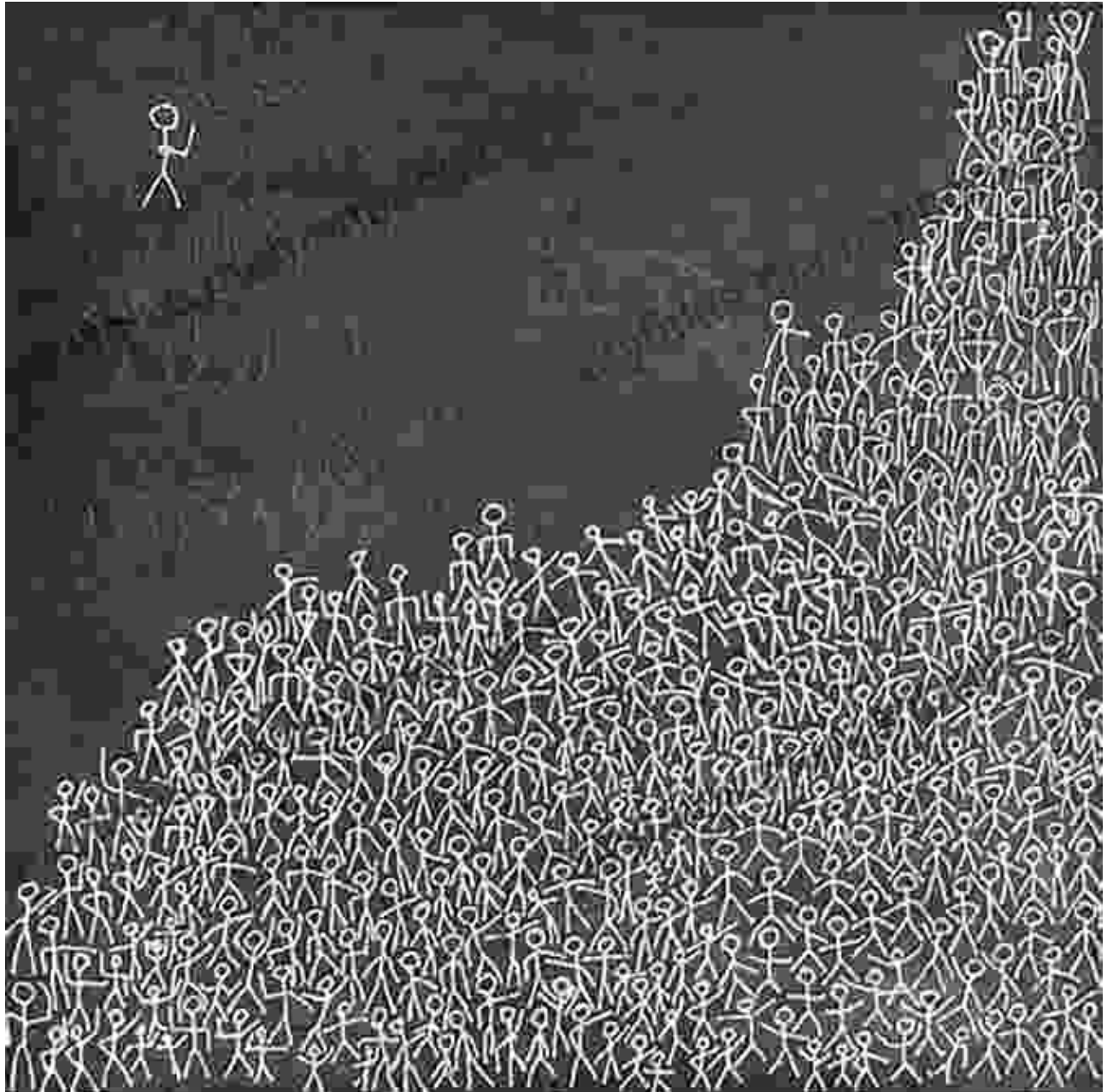
However, even in his solitude, the misanthrope retains a longing for connection. This longing manifests itself in his keen observation of the natural world. In the beauty and fragility of nature, the misanthrope finds a form of solace and a sense of belonging.



Language and Imagery

Graham's use of language in "The Misanthrope" is exquisite and evocative. She employs a rich vocabulary that encompasses both the concrete and the abstract, capturing the complex emotions and observations of the misanthrope.

Sensory imagery is employed throughout the poem, evoking the sights, sounds, and textures of the world experienced by the misanthrope. This sensory richness adds depth and immediacy to the reader's experience, allowing them to fully immerse themselves in the poem's atmosphere.



Philosophical Underpinnings

"The Misanthrope" is more than just a portrayal of an isolated character. It delves into profound philosophical questions about the nature of human existence and the search for meaning.

Graham explores the tension between individualism and community, questioning whether true connection is possible in a world where self-interest often prevails. The misanthrope's insights challenge conventional notions of happiness and fulfillment, suggesting that true contentment may lie in solitude and introspection.

The poem also raises questions about the role of language in our understanding of the world. The misanthrope's inability to fully express his thoughts and feelings through language highlights the limitations of human communication and the inherent difficulty of conveying the complexities of human experience.

Poetic Structure and Symbolism

The structure of "The Misanthrope" is loosely organized around a series of short, interconnected stanzas. This structure mimics the fragmented thoughts and observations of the misanthrope, mirroring his disjointed relationship with the world.

Graham employs powerful symbolism throughout the poem. The misanthrope's solitary figure represents the alienation and disconnectedness that many individuals experience in modern society. The landscape, both urban and natural, serves as a backdrop against which the misanthrope's inner struggles play out.



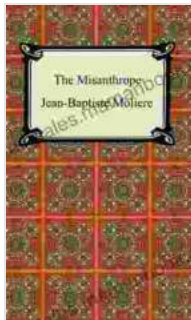
Contemporary Significance

Jorie Graham's "The Misanthrope" resonates deeply with contemporary audiences. In an era marked by social isolation, disconnection, and a preoccupation with self-image, the poem offers a poignant and thought-provoking exploration of the human condition.

The poem's themes of isolation, the search for connection, and the complexities of human nature remain universally relevant. Graham's insights into the human psyche provide a framework for understanding our own struggles and the ways in which we relate to ourselves and others.

Jorie Graham's "The Misanthrope" is a profound and moving work of art that delves into the intricacies of human experience. Through the eyes of a solitary outsider, Graham explores themes of isolation, connection, and the search for meaning.

Graham's evocative language, philosophical underpinnings, and masterful use of symbolism create a richly textured and thought-provoking work that continues to resonate with readers today. "The Misanthrope" challenges our assumptions about happiness and fulfillment, inviting us to embrace the complexity of our own humanity.

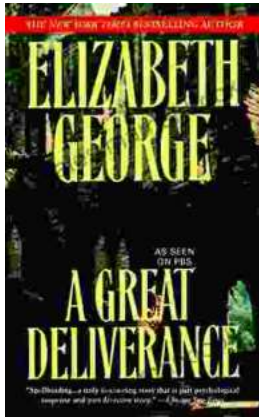


The Misanthrope by Jorie Graham

★ ★ ★ ★ ☆ 4 out of 5

- Language : English
- File size : 184 KB
- Text-to-Speech : Enabled
- Screen Reader : Supported
- Enhanced typesetting : Enabled
- Print length : 86 pages
- Lending : Enabled

FREE **DOWNLOAD E-BOOK** 



The Great Deliverance Inspector Lynley: A Literary Masterpiece Unraveling the Intricacies of Policing and Human Character

: In the realm of detective fiction, Elizabeth George's "The Great Deliverance Inspector Lynley" stands as a towering literary achievement. This captivating novel delves into...



Metal Gear Solid Ground Zeroes Guide, Walkthrough, Tips, Cheats

Metal Gear Solid Ground Zeroes is a prologue to the highly anticipated Metal Gear Solid V: The Phantom Pain. It is a standalone game that was...